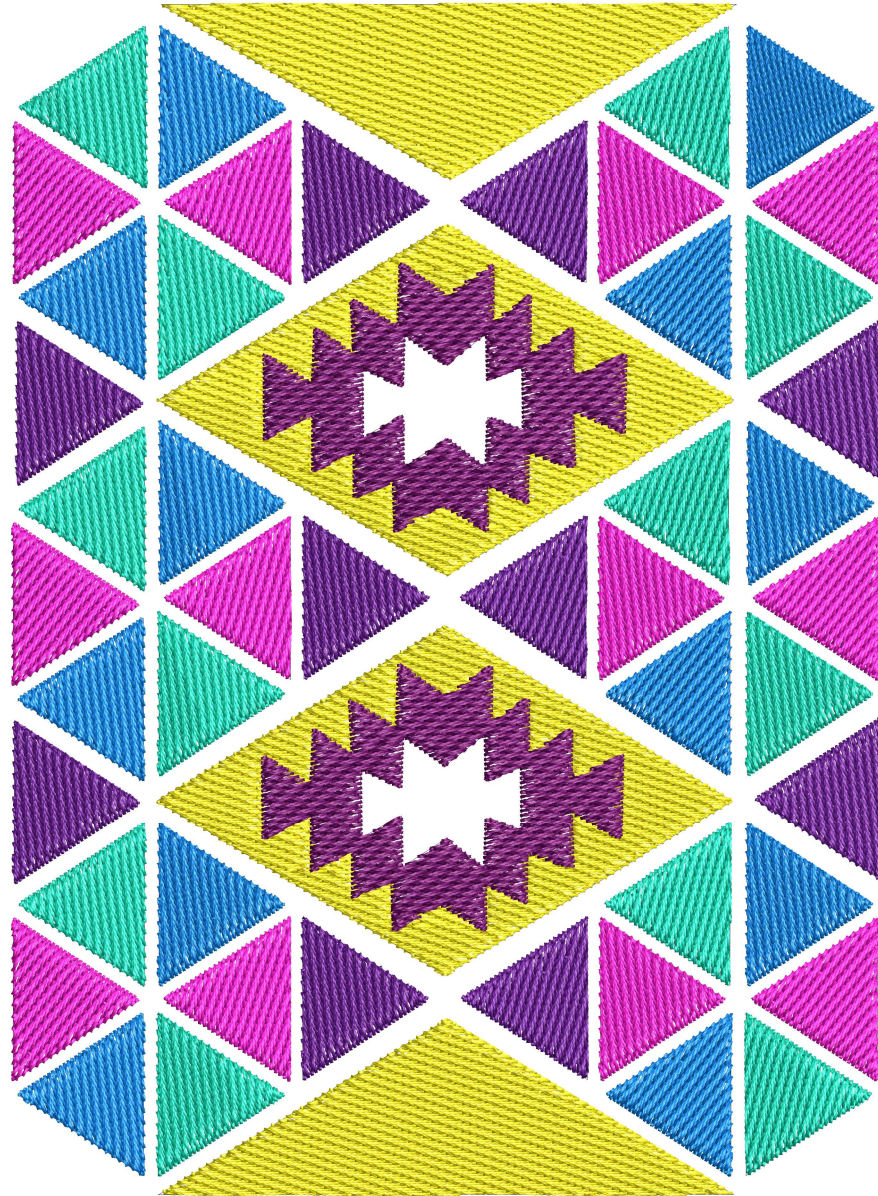


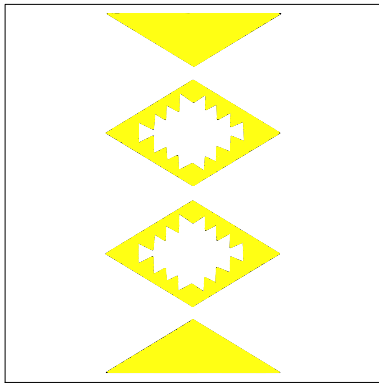
Stickmuster:KK1558 IKAT 3
157x116.EMB

Höhe: 157.5 mm
Breite: 115.3 mm
Stiche: 26.720
Farben: 6
Farbwechsel: 5
Fadenschnitte: 52
Maschinenformat: Janome
Rahmen: Brother 300x200
Stoffart: Reine Baumwolle
Benötigte Stabilisierung: Deckschicht:
Stickvlies: Abreißbar x 2
Spulen-Fadenverbrauch: 54.03m

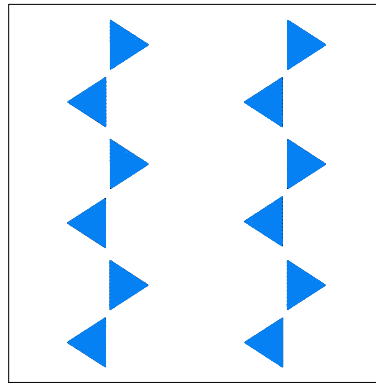
Farbreihenfolge:

#	Farbe	Element	Code	Name	Tabelle
1.	14		0501	Sun	Isacord 40
2.	3		R5	G129 B243	
3.	4		R11	G222 B182	
4.	5		R251	G21 B218	
5.	7		2900	Deep Purple	Hatch Default
6.	16		2704	Purple Passion	Isacord 40

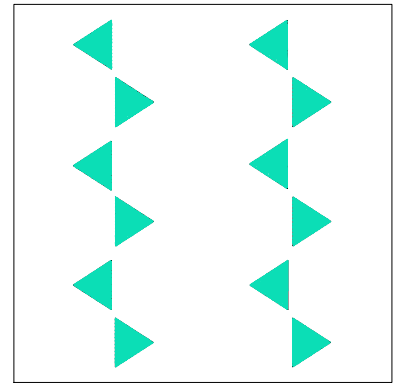




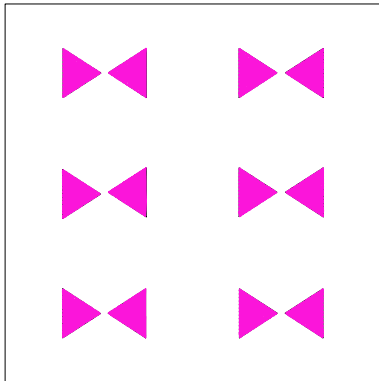
Stopp #: 1
 Element:
 Code: 0501
 Name : Sun
 Tabelle: Isacord 40
 Stiche: 6.964
 Verwendeter Faden: 38.94m



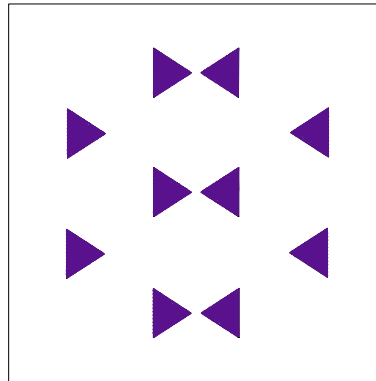
Stopp #: 2
 Element:
 Code:
 Name : R5 G129 B243
 Tabelle:
 Stiche: 4.416
 Verwendeter Faden: 23.80m



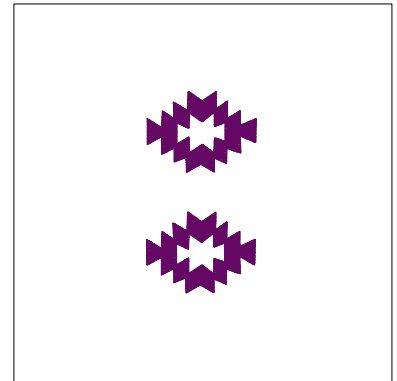
Stopp #: 3
 Element:
 Code:
 Name : R11 G222 B182
 Tabelle:
 Stiche: 4.347
 Verwendeter Faden: 23.49m



Stopp #: 4
 Element:
 Code:
 Name : R251 G21 B218
 Tabelle:
 Stiche: 4.243
 Verwendeter Faden: 22.92m



Stopp #: 5
 Element:
 Code: 2900
 Name : Deep Purple
 Tabelle: Hatch Default
 Stiche: 3.542
 Verwendeter Faden: 19.20m



Stopp #: 6
 Element:
 Code: 2704
 Name : Purple Passion
 Tabelle: Isacord 40
 Stiche: 3.208
 Verwendeter Faden: 16.28m